

Hello!

My Name is CASPER

**Nursing Home Collaborative
Workgroup Meeting
September 22, 2005**



**Arizona
Department of
Health Services**

**Sylvia Balistreri, RN, BSN
Program Manager
Arizona Department of Health Services
Office of Long Term Care Licensing**

Presentation Topics

- Meet CASPER
- Access the New Blended QI/QM Reports
- View Your Blended QI/QM Report



CASPER



Certification
And
Survey
Provider
Enhanced
Reporting



Arizona Department of Health Services
Division of Licensing Services

Accessing the New MDS QI/QM Reports

<http://www.qtso.com/mdsdownload.html>




Arizona Department of Health Services
Division of Licensing Services

CMS MDS Welcome Page - Microsoft Internet Explorer

File Edit View Favorites Tools Help

Back Forward Stop Refresh Home Search Favorites Media Print Mail

Address Go Links




To access the new MDS QI/QM reports, select the CASPER Reporting link from the CMS MDS System Welcome page.

Welcome to the CMS MDS System!

Reminder: The State QIES System may be down for maintenance the third Sunday of each month.

If you experience any problems submitting or retrieving reports, please try again on Monday.



[MDS Submissions](#)

Attention: *Effective 7/17/2005, new MDS QI/QM reports are available. Facilities must access the CASPER Reporting application to get the new MDS QI/QM reports.*

[Click here to obtain the training information](#)
Updated Training Materials (7/17/05)

[Analytic Reports \(previously requested OI reports only\)](#)

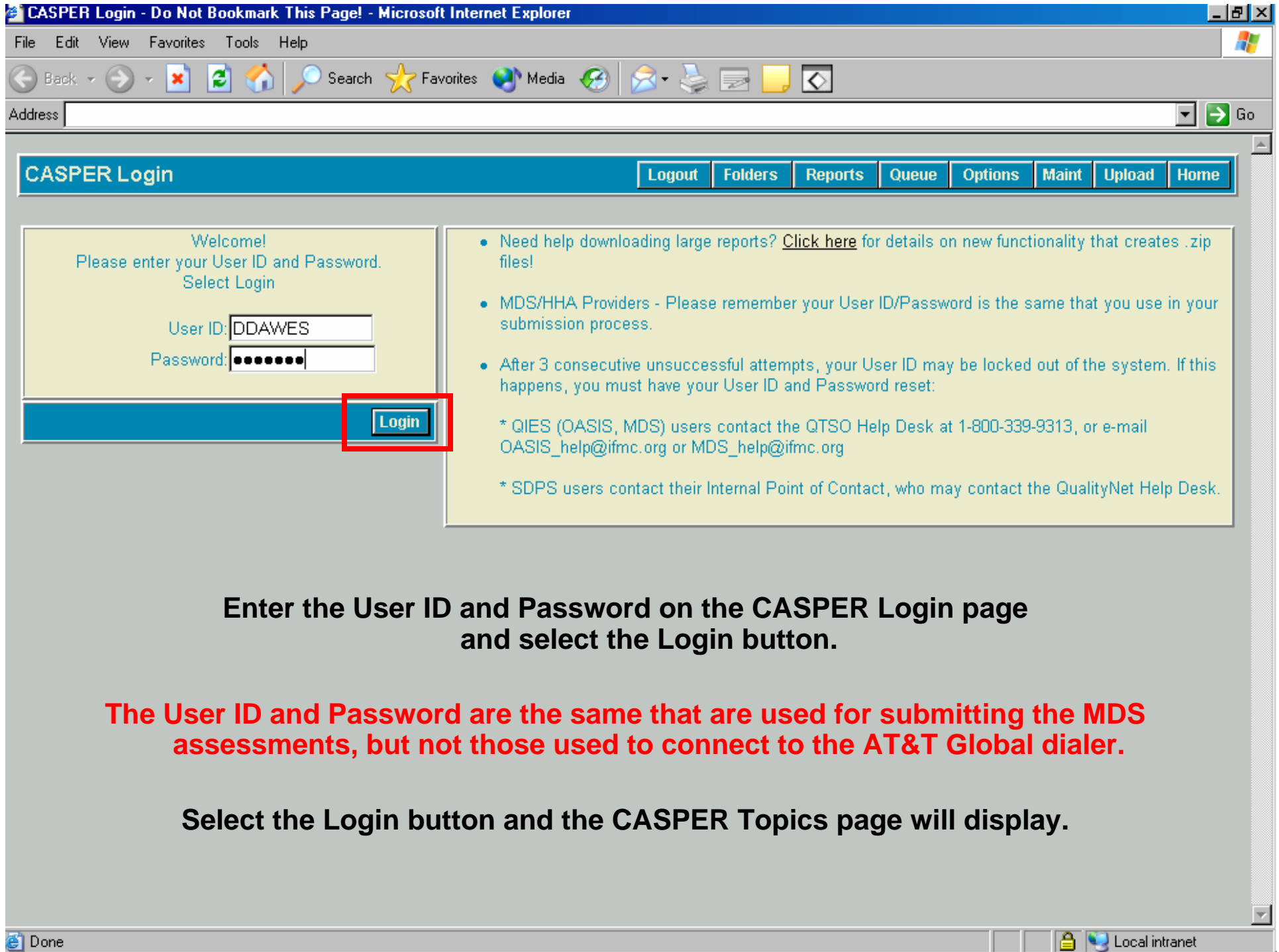
[CASPER Reporting \(Online Reports\)](#)

Why Are My Statistics on the MDS QI/QM Reports Different from Nursing Home Compare? Follow the link below for answers.

[MDS QI/QM Reports vs. Nursing Home Compare](#)

[MDS QI/QM Measure Specifications](#)

Done Local intranet



Enter the User ID and Password on the CASPER Login page and select the Login button.

The User ID and Password are the same that are used for submitting the MDS assessments, but not those used to connect to the AT&T Global dialer.

Select the Login button and the CASPER Topics page will display.

Topics - Microsoft Internet Explorer

File Edit View Favorites Tools Help

Back Forward Stop Refresh Home Search Favorites Media Print Mail New Tab

Address Go

CASPER Topics

Logout Folders **Reports** Queue Options Maint Upload Home

Topics

- Home Page
- Netscape Plug-in
- IE Active X Plug-in
- MS Java Virtual Machine
- ZIP Feature
- PSR Viewer / Unzip Utility

Description For Home Page

Welcome to CASPER

Use the buttons in the toolbar above as follows:

- Logout** - End current session and exit the CASPER Application
- Folders** - View your folders and the documents in them
- Reports** - Select report categories and request reports
- Queue** - List the reports that have been requested but not yet completed
- Options** - Customize the report format, number of links displayed per page and report display size
- Maint** - Perform maintenance such as creating, renaming and/or deleting folders
- Upload** - Upload documents to your folders (Restricted access)
- Home** - Return to this page

Select the Reports button in the toolbar and the CASPER Reports page will display.

Local intranet

CASPER Reports - Microsoft Internet Explorer

File Edit View Favorites Tools Help

Back Forward Stop Refresh Home Search Favorites Media Print Mail New Tab

Address Go

CASPER Reports

[Logout](#) [Folders](#) [Reports](#) [Queue](#) [Options](#) [Maint](#) [Upload](#) [Home](#)

Report Categories

- [Index Reports](#)
- [MDS Provider](#)
- [MDS QI/QM Reports](#)**

MDS QI/QM Reports

Facility Characteristics Report	• Facility Characteristics Report
Facility Quality Measure/Indicator Report	• Facility Quality Measure/Indicator Report
MDS QI/QM Package	• MDS QI/QM Package Report
Quality Measure/Indicator Monthly Trend Report	• Quality Measure/Indicator Monthly Trend Report
Resident Level Report - Chronic Care Sample	• Resident Level Report - Chronic Care Sample
Resident Level Report - Post Acute Sample	• Resident Level Report - Post Acute Sample
Resident Listing Report - Chronic Care Sample	• Resident Listing Report - Chronic Care Sample
Resident Listing Report - Post Acute Sample	• Resident Listing Report - Post Acute Sample

Pages [\[1\]](#)

Enter Criteria To Search For A Report:
(Hint: Leave blank to list all reports) [Search](#)

Done Local intranet

Select the MDS QI/QM Reports link for a list of these reports. Users may request reports individually by selecting the report name link. To request multiple reports with one submission, select the MDS QI/QM Package link.

Requesting Multiple Reports



Arizona Department of Health Services
Division of Licensing Services

CASPER Reports Submit - Microsoft Internet Explorer

File Edit View Favorites Tools Help

Back Forward Stop Refresh Home Search Favorites Media Print Mail

Address Go

CASPER Reports Submit Logout Folders **Reports** Queue Options Maint Upload Home

Report: MDS QI/QM Package

Reports: Facility Quality Measure/Indicator Report
 Facility Characteristics Report
 Resident Listing Report: Chronic Care Sample
 Resident Listing Report: Post Acute Sample
 Resident Level Report: Chronic Care Sample
 Resident Level Report: Post Acute Sample

Begin Date(mm/dd/yyyy):

End Date(mm/dd/yyyy):

Comparison Group: - only applicable to Facility reports

Data was calculated on: 03/21/2005

**By default, the above reports are selected for submission in the MDS QI/QM Package.
The user is allowed to deselect any reports prior to submission of the package.**

**Note: The Quality Measure/Indicator Monthly Trend Report is excluded from the package
as it may be requested for a single measure only.**

Back Submit

CASPER Reports Submit - Microsoft Internet Explorer

File Edit View Favorites Tools Help

Back Forward Stop Refresh Home Search Favorites Media Mail Print Mailbox Reports Home

Address Go

CASPER Reports Submit [Logout](#) [Folders](#) [Reports](#) [Queue](#) [Options](#) [Maint](#) [Upload](#) [Home](#)

Report: MDS QI/QM Package

Reports: Facility Quality Measure/Indicator Report
 Facility Characteristics Report
 Resident Listing Report: Chronic Care Sample
 Resident Listing Report: Post Acute Sample
 Resident Level Report: Chronic Care Sample
 Resident Level Report: Post Acute Sample

Begin Date(mm/dd/yyyy):

End Date(mm/dd/yyyy):

Comparison Group: - only applicable to Facility reports

Data was calculated on: 03/21/2005

Enter the desired Begin Date and End Date in the MM/DD/YYYY format or accept the default values. Select the desired Comparison Group time frame from the dropdown list and select the Submit button. The completed reports may be viewed on the CASPER Folders page by selecting the Folders button.

[Back](#) [Submit](#)

Done Local intranet

CASPER Folders - Microsoft Internet Explorer

File Edit View Favorites Tools Help

Back Forward Stop Refresh Home Search Favorites Media Print Mail New Tab

Address Go








CASPER Folders [Logout](#) [Folders](#) [Reports](#) [Queue](#) [Options](#) [Maint](#) [Upload](#) [Home](#)

Folders

My Inbox

My Inbox

My Inbox

Info	Click Link to View Report	Date Requested	Select
	Quality Measure/Indicator Monthly Trend Report	04/01/2005 11:25:34	<input checked="" type="checkbox"/>
	Resident Level Report: Post Acute Sample	04/01/2005 11:24:14	<input checked="" type="checkbox"/>
	Resident Level Report: Chronic Care Sample	04/01/2005 11:24:14	<input checked="" type="checkbox"/>
	Resident Listing Report: Post Acute Sample	04/01/2005 11:24:14	<input checked="" type="checkbox"/>
	Resident Listing Report: Chronic Care Sample	04/01/2005 11:24:14	<input checked="" type="checkbox"/>
	Facility Characteristics Report	04/01/2005 11:24:14	<input checked="" type="checkbox"/>
	Facility Quality Measure/Indicator Report	04/01/2005 11:24:14	<input checked="" type="checkbox"/>

Pages [1](#)

[SelectAll](#) [Print PSRs](#) [Zip](#) [Move](#) [Delete](#)

Done Local intranet

To Zip multiple reports, click the desired boxes beneath the Select title and checkmarks will display in the boxes. Select the Zip button and a File Download box will display.

Comparison of the Old and New Reports



Arizona Department of Health Services
Division of Licensing Services

Run Date:
10/26/2004 3:12:09 pm
Facility:
LISA01, SACRAMENTO
Comparison Group Used:
All State Facilities: Apr - Jun, 2002

Facility Quality Indicator Profile

Report Period:
4/ 1/2002 to 9/30/2004
Data Submitted By:
10/25/2004
Facility Login ID:
LISA01

Domain / Quality Indicator	# in Num	# in Denom	Facility Percent	Comparison Group Percent	Percentile Rank
Accidents					
1. Incidence of new fractures	0	0		0.9	
2. Prevalence of falls	0	0		7.6	
Behavior/Emotional Patterns					
3. Prevalence of behavioral symptoms affecting others	0	0		16.9	
High risk	0	0		19.3	
Low risk	0	0		9.2	
4. Prevalence of symptoms of depression	0	0		7.9	
5. Prevalence of symptoms of depression without antidepressant therapy	0	0		3.8	
Clinical Management					
6. Use of 9 or more different medications	0	0		42.4	
Cognitive Patterns					
7. Incidence of cognitive impairment	0	0		10.1	
Elimination/Incontinence					
8. Prevalence of bladder or bowel incontinence	0	0		66.3	
High risk	0	0		96.0	
Low risk	0	0		54.6	
9. Prevalence of occasional or frequent bladder or bowel incontinence without a toileting plan	0	0		42.0	
10. Prevalence of indwelling catheter	0	0		8.0	
11. Prevalence of fecal impaction	0	0		0.1	
Infection Control					
12. Prevalence of urinary tract infections	0	0		7.5	
Nutrition/Eating					
13. Prevalence of weight loss	0	0		9.4	
14. Prevalence of tube feeding	0	0		13.7	
15. Prevalence of dehydration	0	0		0.5	

Run Date:
10/26/2004 3:12:09 pm
Facility:
LISA01, SACRAMENTO
Comparison Group Used:
All State Facilities: Apr - Jun, 2002

Facility Quality Indicator Profile

Report Period:
4/ 1/2002 to 9/30/2004
Data Submitted By:
10/25/2004
Facility Login ID:
LISA01

Domain / Quality Indicator	# in Num	# in Denom	Facility Percent	Comparison Group Percent	Percentile Rank
Physical Functioning					
16. Prevalence of bedfast residents	0	0		8.7	
17. Incidence of decline in late loss ADLs	0	0		13.0	
18. Incidence of decline in ROM	0	0		7.7	
Psychotropic Drug Use					
19. Prevalence of antipsychotic use, in the absence of psychotic or related conditions	0	0		18.3	
High risk	0	0		45.1	
Low risk	0	0		14.6	
20. Prevalence of anti-anxiety/hypnotic use	0	0		15.3	
21. Prevalence of hypnotic use more than two times in last week	0	0		4.1	
Quality of Life					
22. Prevalence of daily physical restraints	0	0		17.5	
23. Prevalence of little or no activity	0	0		10.6	
Skin Care					
24. Prevalence of stage 1-4 pressure ulcers	0	0		11.5	
High risk	0	0		15.7	
Low risk	0	0		3.8	

Facility Quality Indicator Profile Report (Old System)

Facility Quality Measure/Indicator Report

Facility Name LISA01
City/State SACRAMENTO, CA
Provider Number 855134
Login/Internal ID LISA01/1234

Run Date 01/25/05 16:04:30
Report Period 10/01/03 - 03/31/04
Comparison Group 100103 - 03/31/04
Report Version Number 1.07

Measure ID	Domain/Measure Description	Facility		Comparison Group				
		Num	Denom	Observed Percent	Adjusted Percent	State Average	National Average	State Percentile
Chronic Care Measures								
Accidents								
1.1	Incidence of new fractures	1	12	8.3%	-	2.3%	2.1%	96
1.2	Prevalence of falls	2	11	18.2%	-	13.4%	13.2%	77
2.1	Prevalence of pressure sores	1	13	7.7%	-	16.0%	16.0%	20
2.2	Prevalence of urinary incontinence	0	11	0.0%	-	25.0%	19.3%	0
2.2-HI	Prevalence of behavioral symptoms affecting others: High risk	0	10	0.0%	-	28.8%	22.5%	0
2.2-LO	Prevalence of behavioral symptoms affecting others: Low risk	0	1	0.0%	-	12.7%	8.3%	0
2.3	Prevalence of symptoms of depression without antidepressant therapy	0	11	0.0%	-	7.0%	5.4%	0
Clinical Management								
3.1	Use of 9 or more different medications	4	11	36.4%	-	52.4%	57.0%	11
Cognitive Patterns								
4.1	Incidence of cognitive impairment	0	2	0.0%	-	10.7%	12.7%	0
Elimination/Incontinence								
5.1	Low-risk residents who lost control of the large bowel or bladder	1	9	11.1%	-	39.4%	46.2%	7
5.2	Residents who have/had a catheter inserted and left in the bladder	0	11	0.0%	0.0%	8.1%	7.9%	0
5.3	Prevalence of occasional or frequent bladder or bowel incontinence without a toileting plan	2	7	28.6%	-	4.4%	5.1%	97
5.4	Prevalence of fecal impaction	0	11	0.0%	-	0.1%	0.1%	0
Infection Control								
6.1	Residents with a urinary tract infection	0	11	0.0%	-	7.5%	9.2%	0
Nutrition/Eating								
7.1	Prevalence of weight loss	2	11	18.2%	-	11.3%	11.1%	87
7.2	Prevalence of tube feeding	0	11	0.0%	-	5.5%	7.5%	0
7.3	Prevalence of dehydration	0	11	0.0%	-	0.4%	0.5%	0
Pain Management								
8.1	Residents who have moderate to severe pain	0	11	0.0%	0.0%	6.7%	7.9%	0
Physical Functioning								
9.1	Residents whose need for help with daily activities has increased	1	13	7.7%	-	15.7%	18.3%	21
9.2	Residents who spend most of the time in bed or in a chair	0	11	0.0%	-	3.0%	5.7%	0
9.3	Residents whose ability to move in and around the room got worse	2	9	22.2%	25.4%	15.4%	17.1%	88
9.4	Incidence of decline in ROM	1	12	8.3%	-	9.2%	9.1%	63

New fields for this report

Facility Quality Measure/Indicator Report (New System)

Note: Dashes represent a value that could not be computed

Facility Quality Measure/Indicator Report

Facility Name: LISA01
 City/State: SACRAMENTO, CA
 Provider Number: 855134
 Login/Internal ID: LISA01/1234

Run Date: 01/25/05 16:04:30
 Report Period: 10/01/03 - 03/31/04
 Comparison Group: 10/01/03 - 03/31/04
 Report Version Number: 1.07

Measure ID	Domain/Measure Description	Facility		Comparison Group				
		Num.	Denom.	Observed Percent	Adjusted Percent	State Average	National Average	State Percentile
Chronic Care Measures								
Psychotropic Drug Use								
10.1	Prevalence of antipsychotic use, in the absence of psychotic or related conditions: Overall	0	10	0.0%	-	23.9%	21.6%	0
10.1-HI	Prevalence of antipsychotic use, in the absence of psychotic or related conditions: High risk	-	0	-	-	42.5%	45.2%	-
10.1-LO	Prevalence of antipsychotic use, in the absence of psychotic or related conditions: Low risk	0	10	0.0%	-	19.8%	17.6%	0
10.2	Prevalence of atypical/typical use	0	10	0.0%	-	18.4%	18.4%	0
10.3	Prevalence of typical use more than two times in last week	0	11	0.0%	-	4.5%	4.0%	0
Quality of Life								
11.1	Residents who were physically restrained	0	11	0.0%	-	4.9%	7.5%	0
11.2	Prevalence of little or no activity	4	11	36.4%	-	12.1%	10.4%	96
Skin Care								
12.1	High-risk residents with pressure ulcers	0	3	0.0%	-	18.3%	16.0%	0
12.2	Low-risk residents with pressure ulcers	1	8	12.5%	-	3.6%	3.6%	96
Post-Acute Care (PAC) Measures								
13.1	Short-stay residents with delirium	1	13	7.7%	6.9%	3.3%	3.6%	83
13.2	Short-stay residents who had moderate to severe pain	0	13	0.0%	-	20.5%	22.3%	0
13.3	Short-stay residents with pressure ulcers	1	13	7.7%	11.1%	20.6%	20.3%	17

New fields for this report

Facility Quality Measure/Indicator Report (New System)

Note: Dashes represent a value that could not be compiled

Quality Measure/Indicator Monthly Trend Report
Measure: New fractures

Page 1 of 1

Facility Name: LISA01
City/State: SACRAMENTO, CA
Provider Number: 855124
Login/Internal ID: LISA01/1234

Run Date: 1/12/2005 19:23:14
Report Period: 10/03 - 03/04
Report Version Number: 1.07



Report Period		Facility			Comparison Group	
Start Month	End Month	Num	Den	Obs Pct	State	National
May-03	Oct-03	1	13	7.7%	2.8%	2.2%
Jun-03	Nov-03	0	13	0.0%	3.0%	2.2%
Jul-03	Dec-03	1	13	7.7%	2.7%	2.2%
Aug-03	Jan-04	2	14	14.3%	2.6%	2.2%
Sep-03	Feb-04	2	13	15.4%	2.3%	2.2%
Oct-03	Mar-04	1	12	8.3%	2.3%	2.1%

The Monthly Trend Report shows a facility's monthly scores on any single QI/QM measure. The months that are displayed are based upon the time period selected by the user. For each month, the report displays the facility's score as well as the average score for the facility's state and for the nation. The data are displayed in both tabular and graphical form, allowing the user to determine whether the facility's scores are increasing or decreasing over time and how those scores compare with state and national averages.

Quality Measure/Indicator Monthly Trend Report (New System)



Arizona Department of Health Services
Division of Licensing Services

Measure Comparison—New Versus Old Measures

QI/QM Measures on New Reports	QI Measure ¹	QM Measure ²	Comments ³
<i>Chronic Care Measures</i>			
<i>Accidents</i>			
1.1 Incidence of new fractures	1		
1.2 Prevalence of falls	2		
<i>Behavior/Emotional Patterns</i>			
2.1 Residents who have become more depressed or anxious		CMOD03	Replaces QI 4 (prevalence of symptoms of depression). Note: QI 4 was a prevalence measure, while the new measure is an incidence measure and may have quite different values.
2.3 Prevalence of symptoms of depression without antidepressant therapy	5		

¹QI numbers correspond to the numbering on the old QI reports.

²QM abbreviations correspond to their designations in the QM user's manual.

³ QMs have replaced QIs when their definitions are similar (although they may not be identical). QIs with no equivalent QM have been retained. Three QIs have been dropped without replacement: QI 8 [Overall] Prevalence of bladder or bowel incontinence, QI 8-HI High risk prevalence of bladder or bowel incontinence, and QI-24 [Overall] Prevalence of stage 1-4 pressure ulcers.

Measure Comparison— New Versus Old Measures

QI/QM Measures on New Reports	QI Measure ¹	QM Measure ²	Comments ³
<i>Chronic Care Measures</i>			
<i>Behavior/Emotional Patterns</i>			
2.2 Prevalence of behavior symptoms affecting others	3		
2.2-HI High risk	3-HI		
2.2-LO Low risk	3-LO		
<i>Clinical Management</i>			
3.1 Use of 9 or more different medications	6		
<i>Cognitive Patterns</i>			
4.1 Incidence of cognitive impairment	7		

¹QI numbers correspond to the numbering on the old QI reports.

²QM abbreviations correspond to their designations in the QM user's manual.

³ QMs have replaced QIs when their definitions are similar (although they may not be identical). QIs with no equivalent QM have been retained. Three QIs have been dropped without replacement: QI 8 [Overall] Prevalence of bladder or bowel incontinence, QI 8-HI High risk prevalence of bladder or bowel incontinence, and QI-24 [Overall] Prevalence of stage 1-4 pressure ulcers.

Measure Comparison—New Versus Old Measures

QI/QM Measures on New Reports	QI Measure ¹	QM Measure ²	Comments ³
<i>Chronic Care Measures</i>			
<i>Elimination/Incontinence</i>			
5.1 Low-risk residents who lost control of their bowels or bladder		CCNT06	Replaces QI 8-LO (prevalence of bladder or bowel incontinence: low risk)
5.3 Prevalence of occasional or frequent bladder or bowel incontinence without a toileting plan	9		
5.2 Residents who have/had a catheter inserted and left in their bladder		CCAT02	Replaces QI 10 (prevalence of indwelling catheter)
5.4 Prevalence of fecal impaction	11		
<i>Infection Control</i>			
6.1 Residents with a urinary tract infection		CCNT04	Replaces QI 12 (prevalence of urinary tract infection)

¹QI numbers correspond to the numbering on the old QI reports.

²QM abbreviations correspond to their designations in the QM user's manual.

³ QMs have replaced QIs when their definitions are similar (although they may not be identical). QIs with no equivalent QM have been retained. Three QIs have been dropped without replacement: QI 8 [Overall] Prevalence of bladder or bowel incontinence, QI 8-HI High risk prevalence of bladder or bowel incontinence, and QI-24 [Overall] Prevalence of stage 1-4 pressure ulcers.

Measure Comparison—New Versus Old Measures

QI/QM Measures on New Reports	QI Measure ¹	QM Measure ²	Comments ³
<i>Chronic Care Measures</i>			
<i>Nutrition/Eating</i>			
7.1 Residents who lose too much weight		CWLS	Replaces QI 13 (prevalence of weight loss) and differs from QI 13 as an exclusion for residents with hospice care has been added.
7.2 Prevalence of tube feeding	14		
7.3 Prevalence of dehydration	15		
<i>Pain Management</i>			
8.1 Residents who have moderate to severe pain		CPAIOX	

¹QI numbers correspond to the numbering on the old QI reports.

²QM abbreviations correspond to their designations in the QM user's manual.

³ QMs have replaced QIs when their definitions are similar (although they may not be identical). QIs with no equivalent QM have been retained. Three QIs have been dropped without replacement: QI 8 [Overall] Prevalence of bladder or bowel incontinence, QI 8-HI High risk prevalence of bladder or bowel incontinence, and QI-24 [Overall] Prevalence of stage 1-4 pressure ulcers.

Measure Comparison—New Versus Old Measures

QI/QM Measures on New Reports	QI Measure ¹	QM Measure ²	Comments ³
<i>Chronic Care Measures</i>			
<i>Physical Functioning</i>			
9.1 Residents whose need for help with daily activities has increased		CADL01	Replaces QI 17 (incidence of decline in late loss ADLs)
9.2 Residents who spend most of their time in bed or in a chair		CBFT01	Replaces QI 16 (prevalence of bedfast residents).
9.3 Residents whose ability to move in and around their room got worse		CMOB01	
9.4 Incidence of decline in ROM	18		
<i>Psychotropic Drug Use</i>			
10.1 Prevalence of antipsychotic use, in the absence of psychotic or related conditions	19		
10.1-HI High risk	19-HI		

¹QI numbers correspond to the numbering on the old QI reports.

²QM abbreviations correspond to their designations in the QM user's manual.

³ QMs have replaced QIs when their definitions are similar (although they may not be identical). QIs with no equivalent QM have been retained. Three QIs have been dropped without replacement: QI 8 [Overall] Prevalence of bladder or bowel incontinence, QI 8-HI High risk prevalence of bladder or bowel incontinence, and QI-24 [Overall] Prevalence of stage 1-4 pressure ulcers.

Measure Comparison—New Versus Old Measures

QI/QM Measures on New Reports	QI Measure ¹	QM Measure ²	Comments ³
<i>Chronic Care Measures</i>			
<i>Psychotropic Drug Use</i>			
10.1-LO Low risk	19-LO		
10.2 Prevalence of antianxiety/hypnotic use	20		
10.3 Prevalence of hypnotic use more than two times in last week	21		
<i>Quality of Life</i>			
11.1 Residents who were physically restrained		CRES01	Replaces QI 22 (prevalence of daily physical restraints)
11.2 Prevalence of little or no activity	23		

¹QI numbers correspond to the numbering on the old QI reports.

²QM abbreviations correspond to their designations in the QM user's manual.

³ QMs have replaced QIs when their definitions are similar (although they may not be identical). QIs with no equivalent QM have been retained. Three QIs have been dropped without replacement: QI 8 [Overall] Prevalence of bladder or bowel incontinence, QI 8-HI High risk prevalence of bladder or bowel incontinence, and QI-24 [Overall] Prevalence of stage 1-4 pressure ulcers.

Measure Comparison—New Versus Old Measures

QI/QM Measures on New Reports	QI Measure ¹	QM Measure ²	Comments ³
<i>Chronic Care Measures</i>			
<i>Skin Care</i>			
12.1 High-risk residents with pressure ulcers		CPRU02	Replaces QI 24-HI (prevalence of stage 1-4 pressure ulcers: high risk)
12.2 Low-risk residents with pressure ulcers		CPRU03	Replaces QI 24-LO (prevalence of stage 1-4 pressure ulcers: low risk)
<i>Post-Acute Care (PAC) Measures</i>			
13.1 Short-stay residents with delirium		PAC-DEL0X	
13.2 Short-stay residents who had moderate to severe pain		PAC-PAI0X	
13.3 Short-stay residents with pressure ulcers		PAC-PRU0X	

¹QI numbers correspond to the numbering on the old QI reports.

²QM abbreviations correspond to their designations in the QM user's manual.

³ QMs have replaced QIs when their definitions are similar (although they may not be identical). QIs with no equivalent QM have been retained. Three QIs have been dropped without replacement: QI 8 [Overall] Prevalence of bladder or bowel incontinence, QI 8-HI High risk prevalence of bladder or bowel incontinence, and QI-24 [Overall] Prevalence of stage 1-4 pressure ulcers.

Accessing the Old MDS QI Reports



Arizona
Department of
Health Services


Arizona Department of Health Services
Division of Licensing Services

CMS MDS Welcome Page - Microsoft Internet Explorer

File Edit View Favorites Tools Help

Back Forward Stop Refresh Home Search Favorites Media Print Mail


Address Go Links



Welcome to the CMS MDS System!

Reminder: The State QIES System may be down for maintenance the third Sunday of each month.


If you experience any problems submitting or retrieving reports, please try again on Monday.



[MDS Submissions](#)

Attention: *Effective 7/17/2005, new MDS QI/QM reports are available. Facilities must access the CASPER Reporting application to get the new MDS QI/QM reports.*

[Click here to obtain the training information](#)
Updated Training Materials (7/17/05)

 [Analytic Reports \(previously requested QI reports only\)](#)

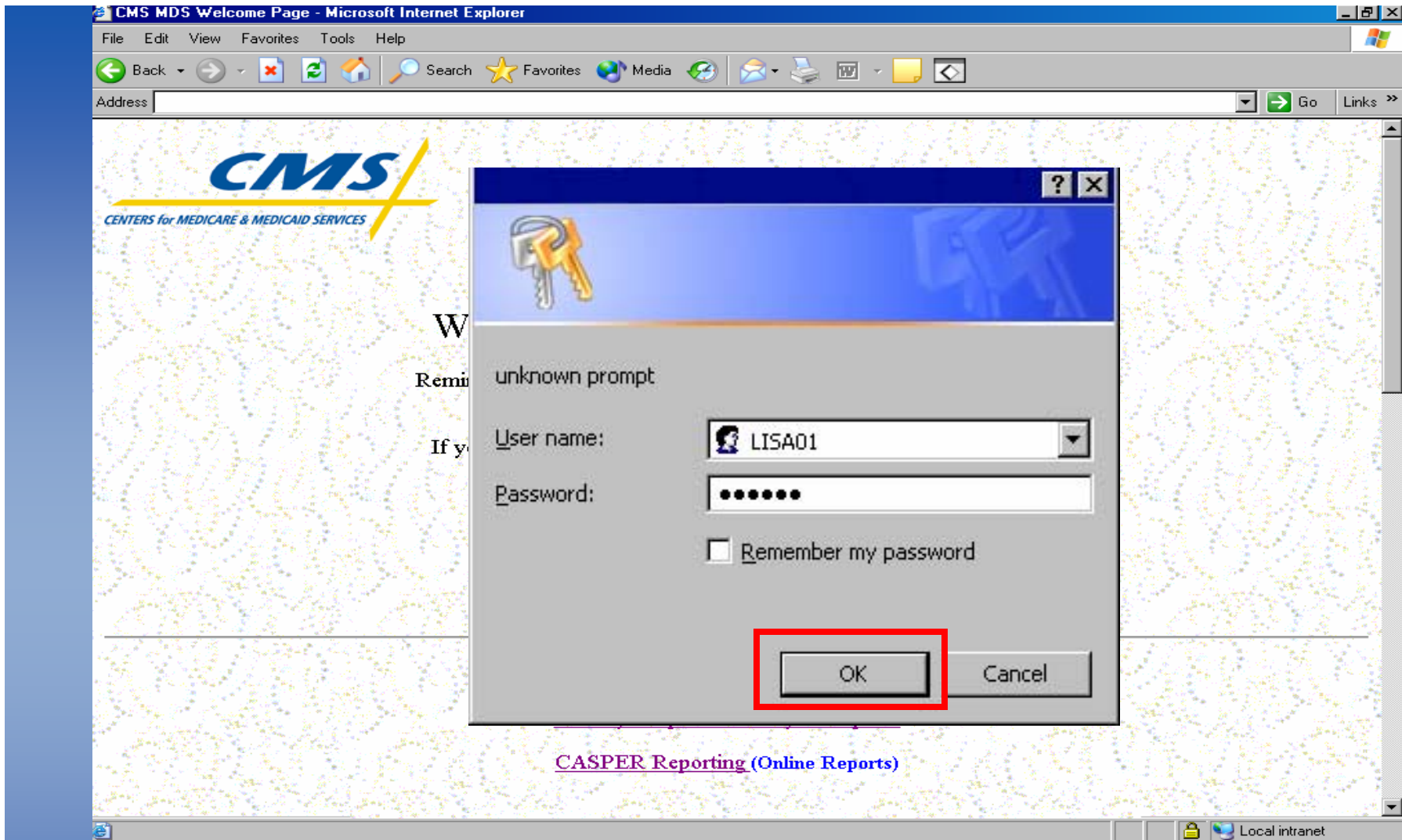
[CASPER Reporting \(Online Reports\)](#)

Why Are My Statistics on the MDS QI/QM Reports Different from Nursing Home Compare? Follow the link below for answers.

[MDS QI/QM Reports vs. Nursing Home Compare](#)

[MDS QI/QM Measure Specifications](#)

Done Local intranet



Enter your User name and Password. The User name and Password are the same that are used for submitting the MDS assessments. Select the OK button and the Provider Feedback Reporting System page will display.



Arizona Department of Health Services
Division of Licensing Services

Provider Feedback Reports - Microsoft Internet Explorer

File Edit View Favorites Tools Help

Back Forward Stop Refresh Home Search Favorites Media Print Mail News RSS Feeds

Address Go Links >>

Provider Feedback Reporting System

[Already Requested Reports](#) ←

Displays a list of all the reports your facility has ever requested with hyperlinks to the completed reports.

[Known Problems](#)

Lists some problems that you may encounter with certain browsers.

[Home](#)

Select the Already Requested Reports link and the Already Requested Reports page will display.

Local intranet

Already Requested Reports - Microsoft Internet Explorer

File Edit View Favorites Tools Help

Back Forward Stop Refresh Home Search Favorites Media

Address Go Links

Already Requested Reports

Request	Date	Reports	Status
262522	10/27/2004 10:57:37	6	Completed
262521	10/26/2004 15:12:04	6	Completed

[Home](#) [Data Submission](#) [Report Home](#)

Select the desired report Request number and the Provider Feedback Reports page will display.

Done Local intranet

Analytic Reports - Microsoft Internet Explorer

File Edit View Favorites Tools Help

Back Forward Stop Refresh Home Search Favorites Media Print Mail News RSS

Address Go Links >>

Provider Feedback Reports

Requested Reports:

Beginning 4/1/2004, Ending 10/24/2004, As of 10/26/2004

[Facility Quality Indicator Profile](#) ←

- Comparison Group: **All State Facilities**
- Comparison Group Update: **Apr - Jun, 2004**

[Facility Characteristics](#)

- Comparison Group: **All State Facilities**
- Comparison Group Update: **Apr - Jun, 2004**

[Resident Quality Indicator Summary](#)

- Display: **All Residents**

[Resident Listing](#)

[Data Submission Summary](#)

- Months of Data: **6**

[Assessment Summary](#)

- Months of Data: **6**

Select the desired report name link and that report will display.

Local intranet

File Edit View Favorites Tools Help

Back Forward Stop Home Search Favorites Media

Address Go Links >>

Select Text 75%

Create an Adobe PDF from your desktop

Options x

- LISA01
 - Facility Quality Indicator F
 - Facility Characteristics
 - Resident Quality Indicator
 - Resident Listing
 - Data Submission Summar
 - Assessment Summary

Bookmarks

Signatures

Layers

Pages

Facility Quality Indicator Profile

Run Date: 10/27/2004 10:57:40 am	Report Period: 4/ 1/2004 to 10/24/2004
Facility: LISA01, SACRAMENTO	Data Submitted By: 10/26/2004
Comparison Group Used: All State Facilities: Apr - Jun, 2004	Facility Login ID: LISA01

Domain / Quality Indicator	# in Num	# in Denom	Facility Percent	Comparison Group Percent	Percentile Rank
<u>Accidents</u>					
1. Incidence of new fractures	0	0		0.9	
2. Prevalence of falls	0	0		7.1	
<u>Behavior/Emotional Patterns</u>					
3. Prevalence of behavioral symptoms affecting others	0	0		15.6	
High risk	0	0		17.8	
Low risk	0	0		8.0	
4. Prevalence of symptoms of depression	0	0		7.2	
5. Prevalence of symptoms of depression without antidepressant therapy	0	0		3.3	
<u>Clinical Management</u>					
6. Use of 9 or more different medications	0	0		50.2	
<u>Cognitive Patterns</u>					
7. Incidence of cognitive impairment	0	0		9.6	
<u>Elimination/Incontinence</u>					
8. Prevalence of bladder or bowel incontinence	0	0		66.8	
High risk	0	0		96.8	
Low risk	0	0		56.0	
9. Prevalence of occasional or frequent bladder or bowel incontinence without a toileting plan	0	0		40.4	
10. Prevalence of indwelling catheter	0	0		7.9	

1 of 7

Done Local intranet

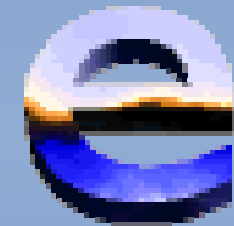
Contact Information

Sylvia Balistreri, RN, BSN
Program Manager
Arizona Department of Health Services
Division of Licensing Services
Office of Long Term Care Licensing
150 N. 18th Avenue, Suite 440
Phoenix, AZ 85007-3245

Phone: 602.364.3878

Fax: 602.364.4765

E-mail: balists@azdhs.gov



MAIL



Arizona Department of Health Services
Division of Licensing Services